



# TruCheck™ USB

***From the Leader in ISO-Compliant Bar Code Verification!  
The most advanced and easy-to-use bar code verifier ever made.  
Results with the touch of a button!***

## **Proven Accuracy, Repeatability and Ease-of-Use from Webscan, the bar code experts!**

Webscan, the leader in standards compliant bar code verification, takes all the hassle out of 2D bar code verification. TruCheck USB provides a fully integrated and portable TruMatrix™ imaging head that connects to a PC through the USB port. Simply position the imager over a bar code and press the button. Clear and concise results are displayed instantly. The graphic interface shows operators clearly where potential problems exist. The TruMatrix imager features integrated illumination and a rugged housing. There is nothing to focus and nothing to align. You are guaranteed the most accurate and repeatable verification results.

## **Calibration and Traceability**

All Webscan systems are calibrated and fully traceable to NIST standards. Calibration is performed by the user in a matter of seconds. You always know that your system is measuring accurately. There is never a question of accuracy with Webscan technology.



## **Fully Compliant with ISO 15415**

- Data Matrix ECC 200 (ISO 16022)
- QR Code and Micro QR Code (ISO 18004)
- PDF & Micro PDF
- GS1 DataBar family including composite

## **Fully Compliant with AIM DPM Standard**

## **Fully Compliant with ISO 15416**

- Linear Symbologies such as Code 128

## **Checks GS1 AI Data format**

## **Checks DoD UID Data format**

<b>Features</b>	<b>Benefits</b>
Accurate and repeatable results with the push of a button	<u>Anyone</u> can use it. Eliminates operator error. No need for expensive operator training
Hardware configurations for any application	Standard lighting or special lighting for direct part marking.
ISO 15415, AS9132, ISO 16022, AIM DPM, ISO 15416 Compliant	Guarantees results meet specifications.
In depth reporting	Assists in corrective action.

Flexible to meet your requirements

**No matter what the application;  
DoD, Aerospace, Automotive,  
Pharmaceutical, Healthcare,  
Telecommunications, Electronics  
Component manufacturing...**

**With the click of a mouse you can change  
the system parameters to meet your  
verification criteria.**

Verify Linear 1D bar codes  
Verify Linear 2D bar codes  
Verify 2D Data Matrix

## Features and Specifications

### Features:

- CCD Imager with Integrated Illumination
- USB interface to PC
- ISO grading
- Data export to printer, PDF file or Excel
- Software easily upgradeable
- Calibrated to NIST traceable standards
- Parses and validates industry standard data formats

**Symbology:** Data Matrix, QR Code, GS1-DataBar (formerly RSS), GS1-Composite Symbology, UPC/EAN, Code 128, Code 39, TLC-39, Codabar, PDF 417, Micro PDF 417 (limited to Field of View size)

**Light Source:** Narrow band 660nm LED

### Decoding/Grading Analysis Specifications

Full ISO 15415 and ISO-15416 Grading A, B, C, D, F: Unused Error Correction, Modulation, Axial non-uniformity, Grid non-uniformity, Symbol Contrast, Reference Decode, Finder Pattern Damage, Bar Width Growth (X and Y), Quiet Zone, AIM DPM Grading: Cell Contrast, Cell Mod. Full 10 scan ANSI X3.182

### Specification Conformance:

MIL-STD 130N, MIL STD 130M Chg. 1, ISO 16022, ISO 18004, ISO 15415, ISO-15416, AIQG AS9132, AIM DPM, ISO 15426-2

Version	Lighting	Field of View	Min. X Dim
Standard	45°	25mm x 18mm	7.5 MIL
Wide Angle	45°	40mm x 30mm	10 MIL
DPM	45°/30°/90°	25mm x 18mm	7.5 MIL

### Environment

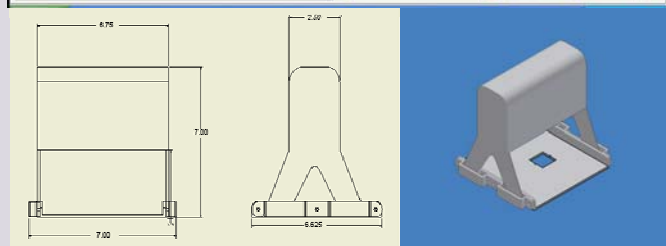
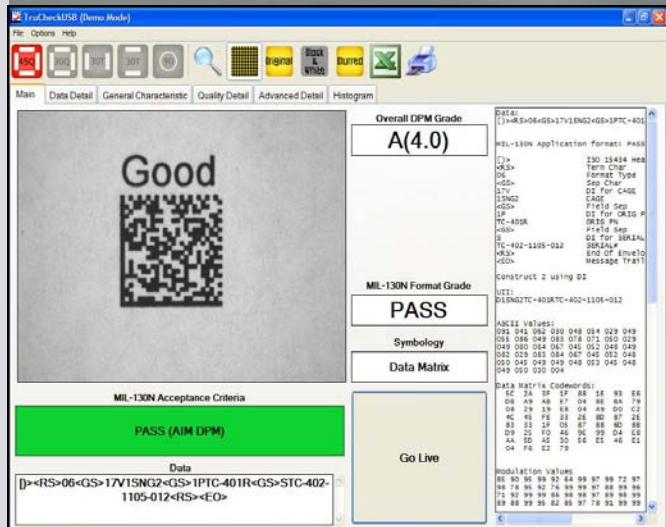
Temperature: 0-40°C  
Humidity: 5% - 95% noncondensing

### Physical

Remote Dimensions:  
7.25" x 6.50" x 7"

### Options

- GS1 Calibrated Conformance Test Card
- Extended Service Plans



For more information, please contact:

**The Provident Group**

603-230-9680

[info@providentgrp.com](mailto:info@providentgrp.com)

### Minimum Hardware Requirements

Pentium III 700 MHz; 512meg Ram; 1.2 Gig Hard drive with 100meg free; Screen resolution 800x600; 1024x768 recommended; USB 2 port

### System Requirements

Supported Operating Systems: Windows 2000 Service Pack 3; Windows 98; Windows 98 Second Edition; Windows ME; Windows Server 2003; Windows XP Service Pack 2 requires Service Pack 6a.



Webscan, Inc. 1254 Sherman Drive, Unit 1 Longmont, CO 80501  
(303) 485-6811 phone (303) 485-6353 fax  
[www.webscaninc.com](http://www.webscaninc.com)

