



# SERIES

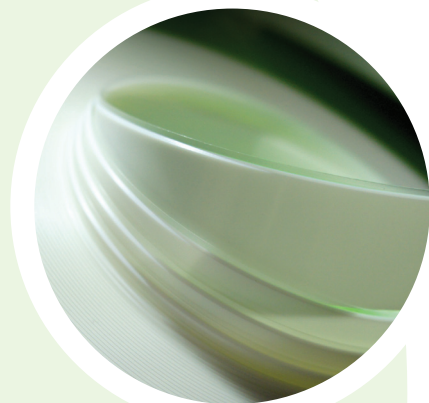
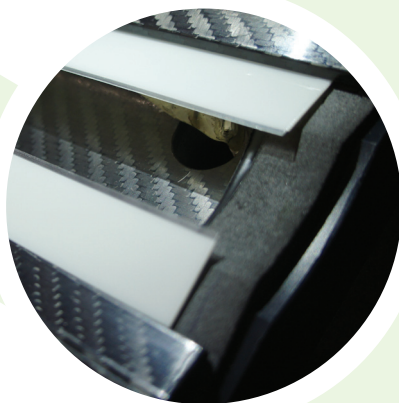
Esterlam Doctor Blades

Our E Series polyester doctor blades continue to set new and improved performance standards in today's flexo and gravure industries. Our unique high quality blades utilise the latest developments in polymer technology extending consistency with significant reduction in roller wear and scoring.

Our polyester is a bi-axially oriented material. The process of stretching the material in the two directions aligns the molecules in the polymer creating a much stronger structure with far higher chemical and temperature characteristics allowing the blade to remain even more stable all the way through the temp curve offering a much higher working/service temperature.

The same characteristics also apply with chemical resistance and to hot water which sometimes causes softening and buckling with various extruded polymers. Bi-axially oriented Polyester extends the best overall results in stability and longevity.

Another important benefit of the E Series is 'spring' memory. Polyester is highly crystallized. During the manufacturing process the material is taken to very high temperatures, stretched with enormous energy, and then rapidly cooled. This together with the unique laminate structure gives the E-Series excellent 'spring memory', (Steel blades are all made from 'spring' steel) This spring memory provides more consistent pressure on the anilox roll over a longer period of time and subsequently more consistent ink values.



[www.providentgrp.com/esterlam](http://www.providentgrp.com/esterlam)